

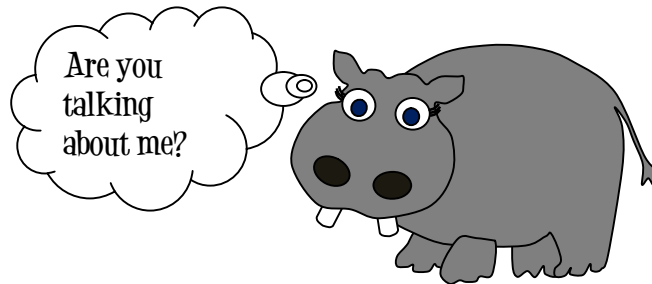
Creating presentations in Windows Movie Maker

Directions: These directions could be for any project. The examples for this assignment are meant for a student's interpretation of problems the world faces today. The example in this demonstration will have sound, transitions, images and video.

1. Create a folder somewhere safe on your computer and name it **moviemaker**.
2. Place at least 10-15 (number will vary depending on the length of your presentation) images in the moviemaker folder. The images should be roughly the same size to maintain quality and prevent distortion. If you plan on expanding your movie to take up the entire size of your monitor, you will want large images.
3. If getting images online, be sure to only look for large images. If doing a Google search, you can click on **Show options**. You can record on a word document what source you used to get your images. Don't bother putting the entire website address. For example, if it is <http://www.nationalgeographic.com/> you can type National Geographic to credit the image source at the end of the presentation.



4. Once **Show options** is selected, click on **Large**.



5. If you don't plan on cropping your images, you need to only get images shaped like a landscape versus a portrait, since the final movie is shaped like a landscape. Examples A and C would work for the presentation, while examples B and D would result in poor results. See step 6 for a better example.



6. Notice how image A in the example for step 5 takes up the movie screen while image B has a lot of black space on both sides. This is not very professional.



Image source: juliechao

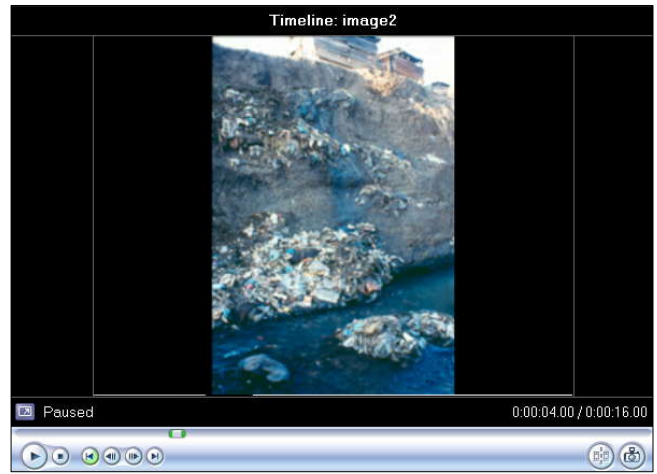
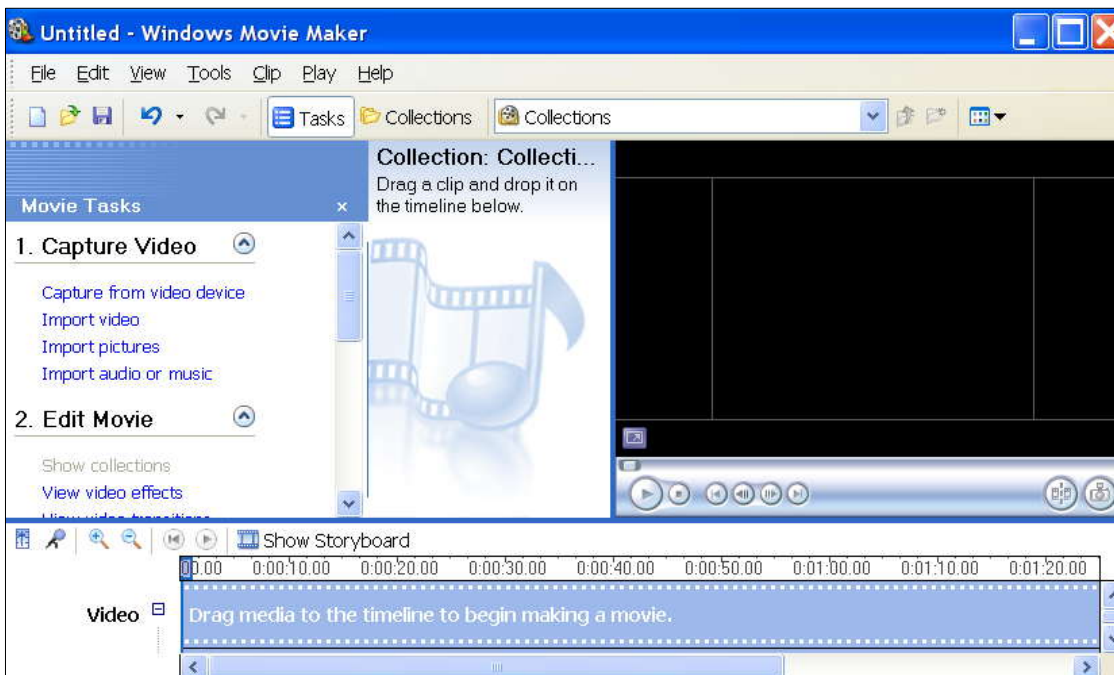


Image source: dwaf.gov.za

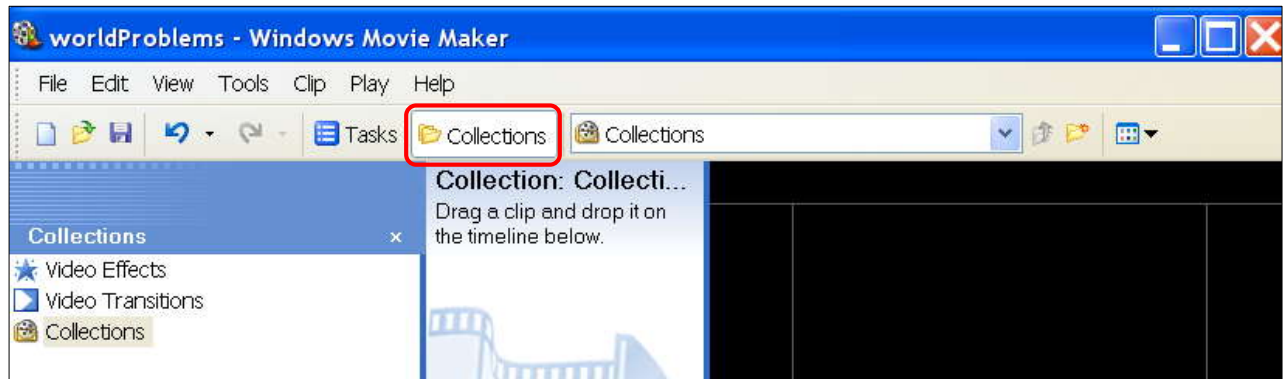
7. Place any videos in this folder that are intended for this project.
8. Open Windows Movie Maker by choosing **Start | Programs | Windows Movie Maker**. If you can't find it, try **Start | Programs | Accessories | Windows Movie Maker**
9. The following window should appear.



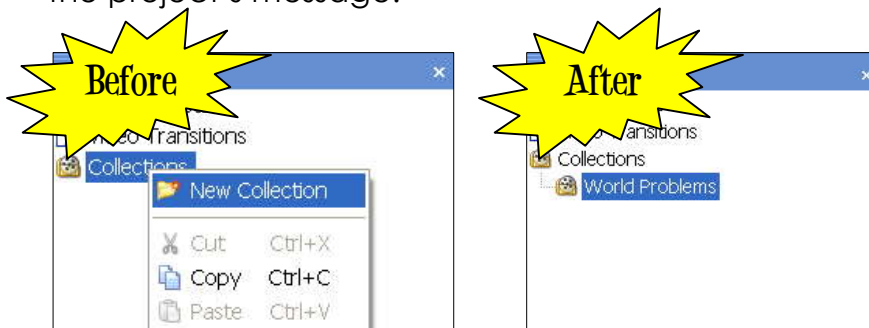
10. Be sure to save the movie by choosing **File Save Project As...** from the main menu.



11. Click on the **Collections** option in the menu. Before making a movie, it is a good habit to get organized.

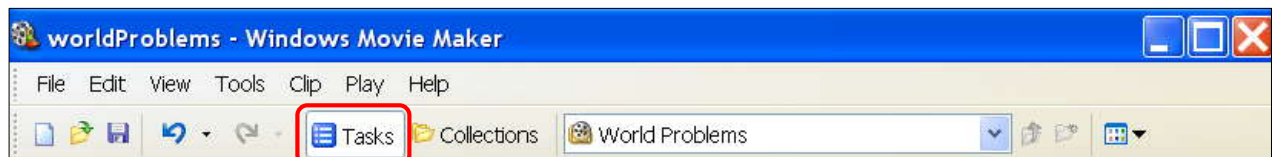


12. Right click on the Collection's option under Collections and choose **New Collection**. Name it according to your project. In this case, it was named World Problems to reflect the project's message.



Adding images to the movie

13. Import images that have already been properly resized or are of the same shape and size. Be sure the **Tasks** option is selected.



14. Choose **Import pictures** under the **Capture Video** category.

